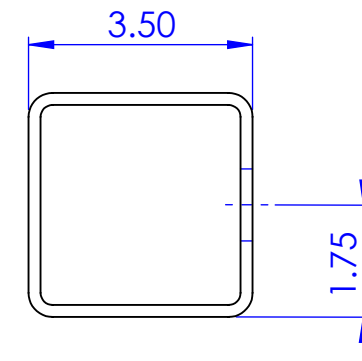
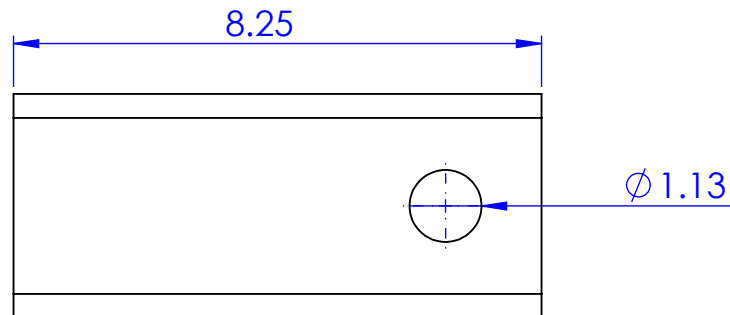
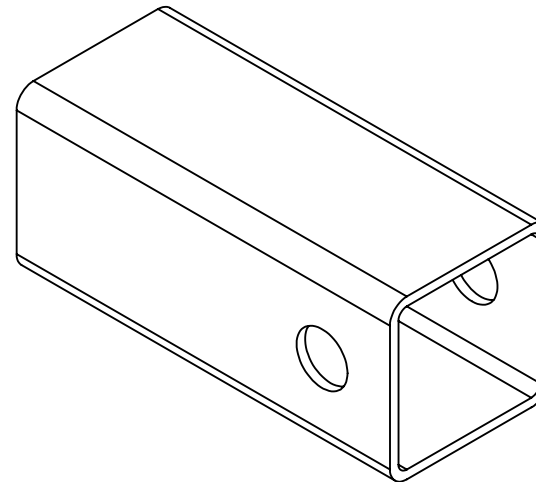
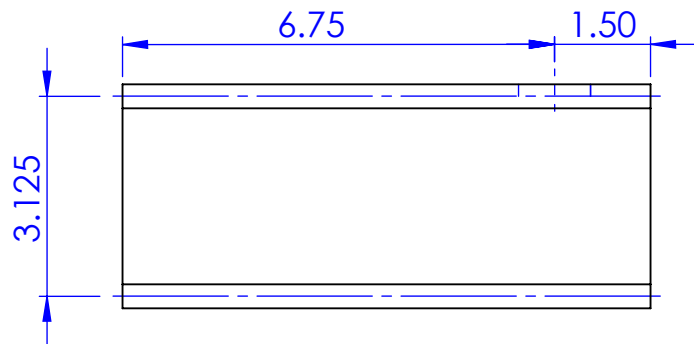


ITEM NO.	PART NUMBER	DESCRIPTION	DRAWING #	QTY.
1	ST-ST 3.5X 0.1875X 8.25	ARM SLEEVE, FLKR ARM EXT. 100 SERIES	40-2514	1

REVISIONS			
REV.	DESCRIPTION	DATE	APPROVED
A	REVISED TO HAVE ITS OWN DRAWING NUMBER	12/19/2022	KD



DRAWING LOCATION:

M:\Drawings\Ethan\Solidworks drawings\40 HYDRAFLKRX500
Extension\2500 Vendor

PART LOCATION:

M:\Drawings\Heath Information\Triple C\STANDARD TC DWG 10-25-11
SOLID WORKS\SW MODELS\IFP-A

PROPRIETARY AND CONFIDENTIAL


THE INFORMATION CONTAINED IN THIS
DRAWING IS THE SOLE PROPERTY OF
HYDRABEDS. ANY REPRODUCTION IN PART
OR AS A WHOLE WITHOUT THE WRITTEN
PERMISSION OF HYDRABEDS IS PROHIBITED.

UNLESS OTHERWISE SPECIFIED:

DIMENSIONS ARE IN INCHES
TOLERANCES:
FRACTIONAL $\pm 1/16$
ANGULAR: MACH ± 1 BEND ± 1
TWO PLACE DECIMAL $\pm .010$
THREE PLACE DECIMAL $\pm .005$

MATERIAL ST-4 x 3/16"

DO NOT SCALE DRAWING

	NAME	DATE	P.O. BOX 248, SABETHA, KS 66534 (785) 284-3674 FAX (785) 284-3931		
D: DRAWN		12/20/2022	 DALE LIFT HYDRABED		
PART #	ST-ST 3.5X 0.1875X 8.25				
ASM #	Asm #				
COMMENTS:					
ARM SLEEVE, FLKR ARM EXT. 100 SERIES					
SIZE	DWG. NO.		REV		
A	40-2514		A		
SCALE: 1:2		WEIGHT: 5.50		SHEET 1 OF 1	

